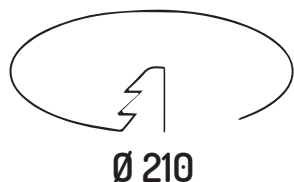
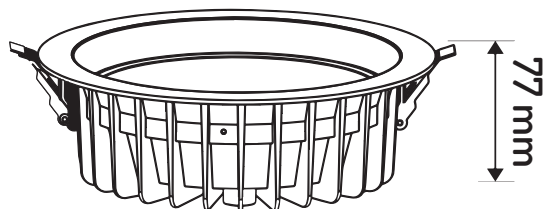


## ANTARES A230



230 mm



### Caratteristiche Elettriche

Tensione:	85 - 277 V
Frequenza:	50 - 60 Hz
Potenza:	Da 19 W a 40 W
Corrente LED:	200 mA
Fattore di potenza:	≥ 0.90
Classe di isolamento:	Classe II (Classe I su richiesta)
Temperatura di esercizio:	-20 / + 50 °C

### Specifiche chip LED

Tipo LED:	COB ad alte prestazioni
Colore luce:	Carne e Salumi - Frutta e Verdura - Pane e Pasticceria Pesce - Formaggi e Latticini
Vita utile:	> 60.000 h corrente modulo LED 600mA (Ta25°)

### Caratteristiche emissione

Flusso luminoso Max:	167 Lm/W
Angolo di diffusione:	60° / 100°
Resa cromatica:	CRI ≥ 80

### Protezioni

Grado di protezione lampada:	IP40
Grado di protezione driver:	IP40
Protezione agli urti:	IK07

### Caratteristiche meccaniche

Materiale corpo lampada:	Alluminio/PC
Materiale ottiche:	Ottica in PMMA
Tipo diffusore:	PMMA ultra-chiaro anti invecchiamento
Colore:	Bianco

### Controllo del flusso (su richiesta)

Interfaccia di dimmerazione:	0-10 / DALI / NFC
Sistema Smart-Lighting:	Controllo punto-punto DALI - Bluetooth
Classe energetica:	A++ / C.A.M. Respected

### Conformità e certificazioni componentistica

EN 60598-1:2008/A11:2009:Luminaires - General requirements and tests. EN 60598-2-5:1998:Luminaires - Particular requirements. EN 62471:Photo biological safety of lamps and lamp systems. EN 62493:2010:Assessment of lighting equipment related to human exposure to electromagnetic fields. EN 55015:2006/A1:2007/A2:2009:Limits and methods of measurement of radio disturbance characteristics of electrical lighting and similar equipment. Equipment for general lighting purposes - EMC requirements. EN 61547:2009: Limits for Harmonic emissions (<16A per phase). EN 61000-3-2:2006/A1:2009/A2:2009/ EN 61000-3-3:2008: Limits. (Limitation of voltage changes, voltage fluctuations and flicker in public low voltage supply systems, for equipment with rated current ≤ 16 A per phase and not subject to conditional connection)

 **Peso: 2.0 Kg**



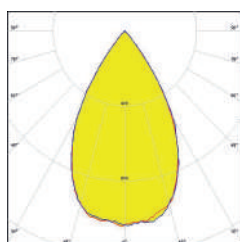
### DATI NOMINALI SORGENTE LED 4000K [ta = 25°C; tj=85°C]

Codice Prodotto	Numero LED	Potenza	mA	Flusso Luminoso	Efficienza [lm/w]
<b>ANTARES A230</b>	1 Modulo LED COB	17	500	2.839	167
	1 Modulo LED COB	20	600	3.260	163
	1 Modulo LED COB	22	650	3.542	161
	1 Modulo LED COB	24	700	3.840	160
	1 Modulo LED COB	27	800	4.239	157
	1 Modulo LED COB	31	900	4.836	156
	1 Modulo LED COB	33	950	5.082	154
	1 Modulo LED COB	36	1050	5.472	152

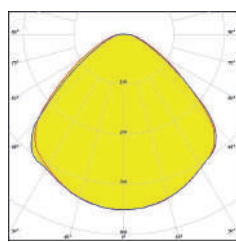
### DATI APPARECCHIO LED 4000K [ta = 25°C; tj=85°C]

Codice Prodotto	Numero LED	Potenza	mA	Flusso Luminoso	Efficienza [lm/w]
<b>ANTARES A230</b>	1 Modulo LED COB	19	500	2.812	148
	1 Modulo LED COB	22	600	3.190	145
	1 Modulo LED COB	24	650	3.408	142
	1 Modulo LED COB	27	700	3.780	140
	1 Modulo LED COB	30	800	4.140	138
	1 Modulo LED COB	35	900	4.760	136
	1 Modulo LED COB	37	950	4.995	135
	1 Modulo LED COB	40	1.050	5.360	134

## FOTOMETRIE

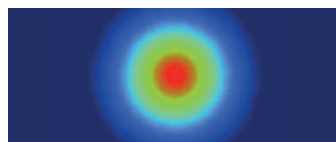


60°

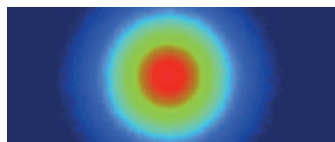


100°

## ANGOLO DIFFUSIONE LUCE



60°



100°